

Epson Stylus® Photo R2880 Series



User's Guide

Copyright Notice

All rights reserved. No part of this publication may be reproduced, stored in a retrieval system, or transmitted in any form or by any means, electronic, mechanical, photocopying, recording, or otherwise, without the prior written permission of Seiko Epson Corporation. The information contained herein is designed only for use with this Epson product. Epson is not responsible for any use of this information as applied to other equipment.

Neither Seiko Epson Corporation nor its affiliates shall be liable to the purchaser of this product or third parties for damages, losses, costs, or expenses incurred by purchaser or third parties as a result of: accident, misuse, or abuse of this product or unauthorized modifications, repairs, or alterations to this product, or (excluding the U.S.) failure to strictly comply with Seiko Epson Corporation's operating and maintenance instructions.

Seiko Epson Corporation shall not be liable for any damages or problems arising from the use of any options or any consumable products other than those designated as Original Epson Products or Epson Approved Products by Seiko Epson Corporation.

Responsible Use of Copyrighted Materials

Epson encourages each user to be responsible and respectful of the copyright laws when using any Epson product. While some countries' laws permit limited copying or reuse of copyrighted material in certain circumstances, those circumstances may not be as broad as some people assume. Contact your legal advisor for any questions regarding copyright law.

Trademarks

Epson, Epson Stylus, and Epson UltraChrome K3 are registered trademarks and Epson Exceed Your Vision is a registered logomark of Seiko Epson Corporation.

UltraSmooth is a registered trademark, PhotoEnhance is a trademark, and Supplies Central and Epson Connection are service marks of Epson America, Inc.

General Notice: Other product names used herein are for identification purposes only and may be trademarks of their respective owners. Epson disclaims any and all rights in those marks.

This information is subject to change without notice.

© 2009 Epson America, Inc. 4/09

Contents

Loading Paper	6
Loading Paper in the Sheet Feeder	6
Loading Paper Using the Single Sheet Guide	8
Loading Roll Paper	11
Loading Thick Media	14
Available Epson Papers	16
Printing From Start to Finish	19
Printing in Windows	19
Printing With Mac OS X 10.5	23
Printing With Mac OS X 10.3 to 10.4	27
Selecting the Correct Paper Type	30
Printing on CDs and DVDs	31
Cleaning the Rollers	31
Loading a CD or DVD	32
Printing on a CD or DVD	34
Removing Your Printed CD/DVD	35
Maintaining Your Printer	36
Checking and Cleaning the Print Head	36
Checking and Aligning the Print Head	37
Checking the Ink Cartridge Status	38
Replacing Ink Cartridges	40
Switching Black Ink Cartridge Types	44

Solving Problems	49
Checking for Software Updates	49
Checking the Printer Lights	50
Problems and Solutions	51
Where To Get Help	54
 Notices.	 55

Introduction

Your Epson Stylus® Photo R2880 Series printer gives you exhibition quality prints on a wide variety of glossy and matte papers in many sizes.

Your outstanding printouts result from these advanced features:

- Epson UltraChrome K3™ with Vivid Magenta ink cartridges for unprecedented gray balance, outstanding tonal range, and astounding color.
- Enhanced media handling including thick, fine art paper, 1.0 to 1.3 mm boards, and rolls for virtually any kind of print up to 13 × 44 inches, with or without borders.
- Resolutions up to 5760 × 1440 optimized dpi (dots per inch) with droplets as small as 3 picoliters for the finest details.
- Direct printing onto ink jet-printable CDs and DVDs for a professional look.
- Two Hi-speed USB 2.0 ports for fast, easy connectivity to multiple computers.
- Downloadable Premium ICC Profiles for precise color management.

Please follow these guidelines as you read the instructions on your *Start Here* sheet, *User's Guide* book, and on-screen *Reference Guide*:

Warning:

Warnings must be followed carefully to avoid bodily injury.

Caution:

Cautions must be observed to avoid damage to your equipment.

Note:

Notes contain important information about your R2880 Series.

Tip:

Tips contain hints for better printing.

Loading Paper

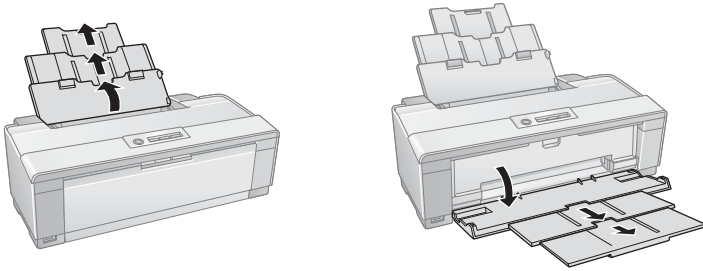
You can print on a variety of paper types in the sheet feeder, or use the single sheet guide for certain specialty papers (see page 8). For multiple photos, panoramics, and banners, load roll paper using the roll paper holders (see page 11). For thick media, use the front manual feed slot (see page 14).

Loading Paper in the Sheet Feeder

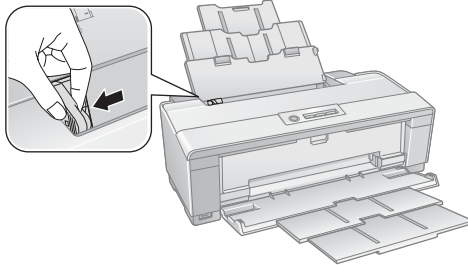
You can load the following paper types and quantities in the sheet feeder. Load other paper types in the rear manual feed slot using the single sheet feeder (see page 8) or roll paper holders (see page 11).

Paper type	Maximum sheets by size
Plain paper	Approximately 120
Epson Presentation Paper Matte	100 50 (B or Super B)
Epson Bright White Paper	80
Epson Photo Paper Glossy	30
Epson Premium Photo Paper Glossy Epson Ultra Premium Photo Paper Glossy	30 (4 × 6 inch, 8 × 10 inch, Letter, 11 × 14 inch) 20 (5 × 7 inch) 10 (B, A3, Super B)
Epson Ultra Premium Photo Paper Luster Epson Ultra Premium Presentation Paper Matte	30 (Letter) 10 (A3 or Super B)
Epson Premium Photo Paper Semi-gloss	30 (4 × 6 inch or Letter) 10 (B)
Epson Premium Presentation Paper Matte	30 (8 × 10 inch or Letter) 10 (11 × 14 inch, A3, or Super B)
Epson Premium Presentation Paper Matte Double-sided Epson Photo Quality Self-adhesive Sheets Epson Iron-On Cool Peel Transfer Paper Epson Exhibition Fiber Paper	1 sheet

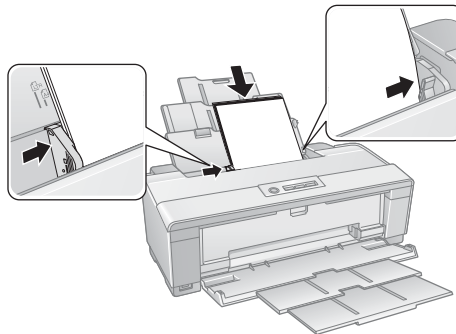
1. Open the paper support and pull up the extensions, then open the output tray and pull out the extensions.



2. Press the button on the edge guide and slide it left.



3. Insert paper, glossy or printable side up, short edge first, against the right side and beneath the tab. Then press the button on the edge guide and slide it against the paper (but not too tightly).



Always load paper short edge first, even for landscape printing.
Load letterhead or pre-printed paper top edge first.

Note:

The edge guide may move slightly during paper feeding and printing. Do not adjust the edge guide or open the printer cover during printing.



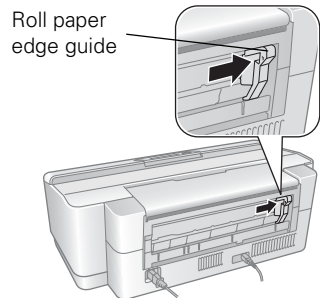
Loading Paper Using the Single Sheet Guide

You can print professional quality photos on these paper types using the single sheet guide and the rear manual feed slot:

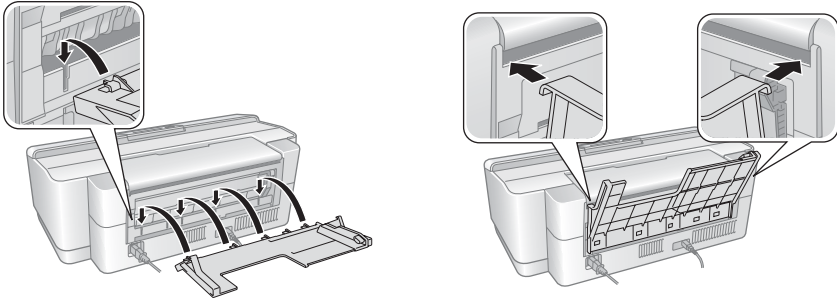
- Epson Velvet Fine Art Paper
- Epson Watercolor Paper Radiant White
- Epson UltraSmooth® Fine Art Paper
- PremierArt™ Matte Scrapbook Photo Paper for Epson
- Epson Exhibition Fiber Paper

(See page 16 for available sizes.)

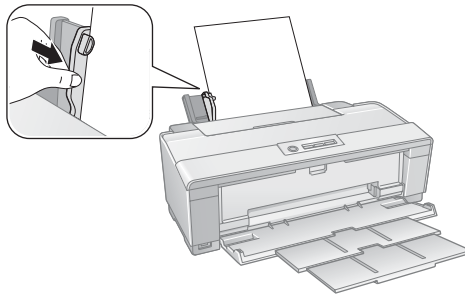
1. Remove any paper from the sheet feeder and close the paper support.
2. Open the output tray and pull out the extensions.
3. Slide the roll paper edge guide on the back of the printer all the way to the right.



4. Attach the single sheet guide by aligning the notches on its base with the slots on the back of the printer. Then hook the tabs over the top of the slot (marked with orange triangles).



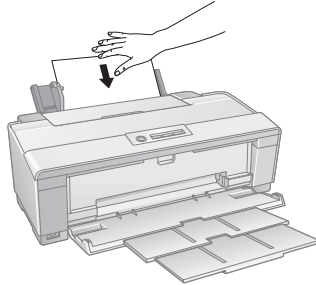
5. Make sure the printer is on so it can load the paper correctly.
6. Insert one sheet of paper, printable side up and against the right side, then slide the edge guide against the sheet, but not too tightly.



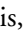
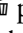
Note:

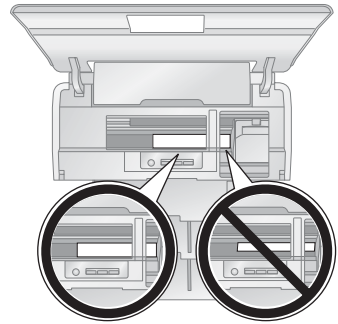
Load paper short edge first, no matter which way your photo faces. Check the paper package for any additional loading instructions.

7. Guide the paper into the printer until it meets resistance and hold it there until the printer pulls it in slightly. Once the printer begins feeding the paper, let go of it.



8. Open the printer cover and make sure the paper has fed all the way into the printer and is straight. The paper must feed straight so the printer can properly identify the edge.

If the paper is crooked or the front edge is visible, you may receive a paper jam error when you print. To avoid this, press and hold the  roll paper button for three seconds to back the paper out. Press the  paper button to clear the paper out error, and load the paper again.



9. Close the printer cover and do not open it during printing.

Loading Roll Paper

You can load roll paper or canvas media for printing large images, panoramic images, or multiple photos, with or without borders.

You can load roll paper in these widths:

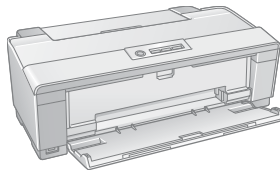
- 8.3-inches wide
- 13-inches wide

(See page 16 for a list of roll paper and canvas media types and sizes.)

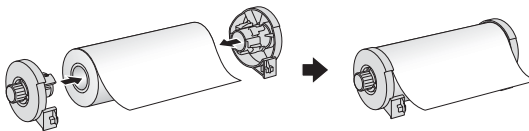
Tip:

It's a good idea to check the ink status and replace cartridges, if necessary, before loading roll paper (see page 38). This is because you must remove roll paper from the printer before replacing cartridges to avoid ink marks on the paper.

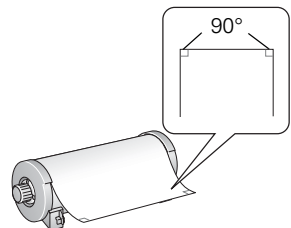
1. Turn on the printer.
2. Remove any paper loaded in the sheet feeder and remove the single sheet guide, if it is installed (see page 8). Also close the paper support.
3. Open the output tray, but do not pull out the extensions.



4. Place the roll paper holders on each end of the paper roll as shown.



5. Remove any tape and protective paper from the end of the roll and make sure the corners of the paper are cut straight and at 90° angles to avoid paper feeding problems.

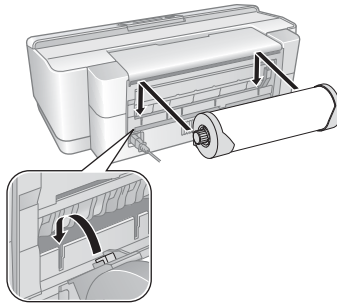


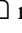
Note:

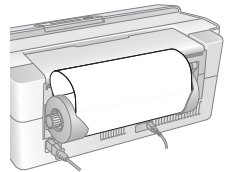
Avoid touching the surface of your paper or canvas media.

With canvas media that you have previously loaded, it's a good idea to cut the edge straight each time you reload it.

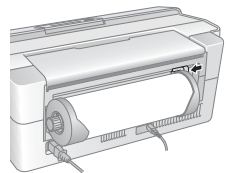
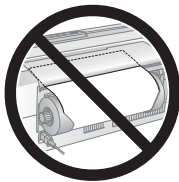
6. Insert the left roll paper holder (marked with a down orange triangle) into the far left slot on the back of the printer (marked with a right orange triangle). Then insert the right roll paper holder in the corresponding slot on the right.



7. Feed the end of the paper into the roll paper feeder, located behind the roll and marked with the  roll paper icon.
8. Slide the roll paper edge guide against the right side of the paper, but not too tightly.

**Caution:**

Do not load roll paper or canvas media into the auto sheet feeder (marked with up orange triangles).





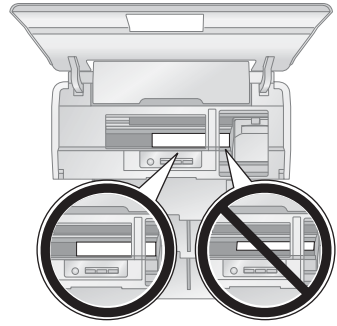
9. Guide the paper into the slot until it meets resistance and hold it there until the printer pulls it in slightly. Once the printer begins feeding the paper, let go of it.

Note:

When loading canvas media, leave 2 to 3 inches of slack in the roll as it feeds and prints for the best results. If you have trouble feeding canvas media, check that the edge is straight and reload it, making sure to keep the roll slack.


10. Open the printer cover and look into the printer to make sure the roll paper or canvas media is feeding straight. The paper must feed straight so the printer can properly identify the edge of it.

If it is crooked or the front edge is visible, you may receive a paper jam error when you print. To avoid this, press the  roll paper button for three seconds to back the paper out. Press the  paper button to clear the paper out error, then load the roll paper or canvas media again.



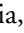
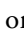


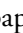
11. For roll paper, turn the knobs on the roll paper holders backward to remove the excess slack. (Leave 2 to 3 inches of slack for canvas media.)
12. Close the printer cover and do not open it during printing.

Removing Roll Paper Prints and Roll Paper

1. To remove your roll paper or canvas media prints, press the  roll paper button to feed the paper forward, then cut off your printed photos straight across the paper at the cutting guideline.

Caution:

Do not pull on the paper as you cut it to avoid damaging your printout. Also do not cut the paper too close to the printer to avoid paper feeding problems.

2. To continue printing on roll paper or canvas media, press the  roll paper button again to return the paper to printing position.
3. If you are finished printing on roll paper or canvas media, press and hold the  roll paper button for 3 seconds to feed the paper backward and out of the printer. If it does not feed all the way out, press the  roll paper button again.
4. Turn the knobs on the roll paper holders backward to roll up the paper, then remove the paper and holders from the printer.
5. Press the  paper button to stop the  paper light from flashing.

Store the unused roll paper or canvas media in its original package away from high temperatures, humidity, and direct sunlight.

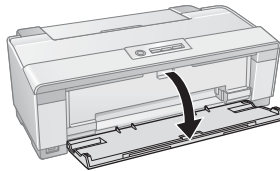
Loading Thick Media

Use the front manual feed slot to load 13 × 19-inch media that is 1.0 to 1.3 mm thick.

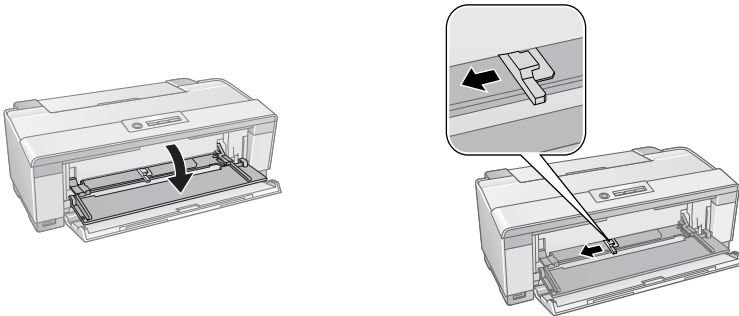
Note:

Make sure there is enough space behind the printer for the media to feed through the printer.

1. Turn on the printer.
2. Remove any roll paper, canvas media, or paper loaded in the sheet feeder or single sheet guide. Then close the paper support.
3. If necessary, remove the single sheet guide (see page 8) or roll paper holders (see page 13).
4. Open the output tray, but do not pull out the extensions.

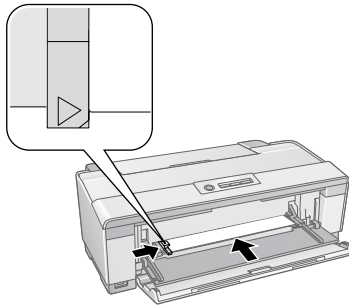


5. Open the front manual feed slot cover and slide the edge guide left.

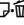


6. Insert one sheet of thick media into the front manual feed slot, short edge first with the printable side face-up, until the trailing edge is aligned with the arrows.

7. Slide the edge guide to the side of the media, but not too tightly.



Note:

If the printer doesn't load the media and the  paper light flashes when printing starts, gently pull out the media and turn off the printer. Then turn on the printer and try again.

Caution:

Don't turn off the printer when thick media is loaded or you may damage the printer. To remove the media from the printer without printing, gently pull out the media.

8. When you're finished printing on thick media, close the front manual feed slot cover.

Available Epson Papers

Epson offers a wide array of high quality papers, making it easy to maximize the impact of your photos, presentations, and creative projects.

You can purchase genuine Epson ink and paper at Epson Supplies CentralSM at www.epson.com/ink3 (U.S. sales) or www.epson.ca (Canadian sales). You can also purchase supplies from an Epson authorized reseller. To find the nearest one, call 800-GO-EPSON (800-463-7766).

Paper name	Size	Part number	Sheet count
Epson Premium Photo Paper Glossy	4 × 6 inches	S041808	40
		S041727	100
		S042119	250
	5 × 7 inches	S041464	20
		S042120	250
	8 × 10 inches	S041465	20
		S042121	250
	Letter (8.5 × 11 inches)	S041286	20
		S041283	25
		S041667	50
11 × 14 inches	S041466	20	
B (11 × 17 inches)	S041290	20	
A3 (11.7 × 16.5 inches)	S041288	20	
Super B (13 × 19 inches)	S041289	20	
8.3 inches × 32 feet	S041376	Roll	
13 inches × 32 feet	S041378	Roll	
Epson Ultra Premium Photo Paper Glossy	4 × 6 inches	S041934	50
		S042181	60
		S042174	100
	5 × 7 inches	S041945	20
8 × 10 inches	S041946	20	
Letter (8.5 × 11 inches)	S041935	20	
	S042182	25	
	S042175	50	

Paper name	Size	Part number	Sheet count
Epson Photo Paper Glossy	4 × 6 inches	S041809 S042038	50 100
	Letter (8.5 × 11 inches)	S041141 S041649 S041271	20 50 100
	B (11 × 17 inches)	S041156	20
	Super B (13 × 19 inches)	S041143	20
Epson Premium Photo Paper Semi-gloss	4 × 6 inches	S041982 S042122	40 250
	Letter (8.5 × 11 inches)	S041331	20
	Super B (13 × 19 inches)	S041327	20
Epson Ultra Premium Photo Paper Luster	Letter (8.5 × 11 inches)	S041405 S041913	50 250
	A4 (8.3 × 11.7 inches)	S041602	250
	A3 (11.7 × 16.5 inches)	S041406	50
	Super B (13 × 19 inches)	S041407 S041604	50 100
	8.3 inches × 32.8 feet	S041408	Roll
	13 inches × 32.8 feet	S041409	Roll
Epson Exhibition Fiber Paper	Letter (8.5 × 11 inches)	S045033	25
	Super B (13 × 19 inches)	S045037	25
Epson Ultra Premium Presentation Paper Matte	Letter (8.5 × 11 inches)	S041341 S041914	50 250
	A4 (8.3 × 11.7 inches)	S041603	250
	A3 (11.7 × 16.5 inches)	S041343	50
	Super B (13 × 19 inches)	S041339 S041605	50 100

Paper name	Size	Part number	Sheet count
Epson Premium Presentation Paper Matte	8 × 10 inches	S041467	50
	Letter (8.5 × 11 inches)	S041257 S042180	50 100
	11 × 14 inches	S041468	50
	A3 (11.7 × 16.5 inches)	S041260	50
	Super B (13 × 19 inches)	S041263	50
Epson Premium Presentation Paper Matte Double-sided	Letter (8.5 × 11 inches)	S041568	50
Epson Presentation Paper Matte	Letter (8.5 × 11 inches)	S041062	100
	Legal (8.5 × 14 inches)	S041067	100
	B (11 × 17 inches)	S041070	100
	Super B (13 × 19 inches)	S041069	100
Epson Velvet Fine Art Paper	Letter (8.5 × 11 inches)	S041636	20
	Super B (13 × 19 inches)	S041637	20
Epson Watercolor Paper Radiant White	Super B (13 × 19 inches)	S041351	20
Epson UltraSmooth Fine Art Paper 325 gsm	Super B (13 × 19 inches)	S041896	25
PremierArt Matte Scrapbook Photo Paper for Epson	Letter (8.5 × 11 inches)	SCR1002	20
	12 × 12 inches	SCR1003	10
Epson Premium Canvas Satin	13 inches × 20 feet	S045066	Roll
Epson Premium Canvas Matte	13 inches × 20 feet	S045072	Roll
Epson Bright White Paper	Letter (8.5 × 11 inches)	S041586	500
Epson Photo Quality Self-adhesive Sheets	A4 (8.3 × 11.7 inches)	S041106	10
Epson Iron-on Cool Peel Transfer Paper	Letter (8.5 × 11 inches)	S041153	10

Printing From Start to Finish

This section describes basic printing from your Windows® or Macintosh® computer. For detailed instructions, see the on-screen *Reference Guide*.

You can also print label designs directly onto ink jet-printable CDs or DVDs. See page 31 and the on-screen *Reference Guide* for details.

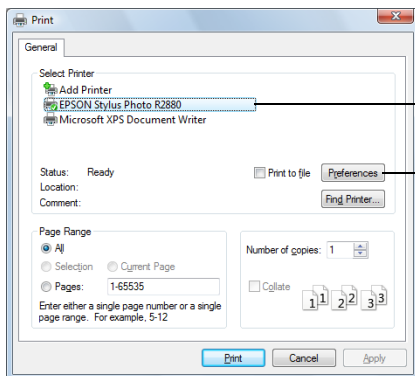
To print photos directly from a PictBridge®-compatible digital camera connected to the R2880, see the on-screen *Reference Guide*.

Tip:

It's a good idea to check for updates to your Epson Stylus Photo R2880 software. See "Checking for Software Updates" on page 49 for instructions.

Printing in Windows

1. Open a photo or document in a printing program, open the File menu, and select Print.



Select EPSON Stylus Photo R2880

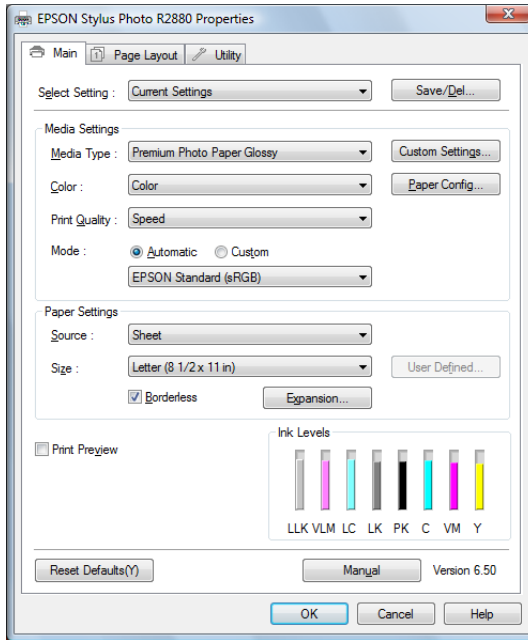
Click here to open your printer software

2. Select EPSON Stylus Photo R2880 and click the Preferences or Properties button.

Note:

If you see a **Setup**, **Printer**, or **Options** button, click it. Then click **Preferences** or **Properties** on the next screen.

3. On the Main tab, select the **Media Type** setting that matches the paper you loaded (see page 30).

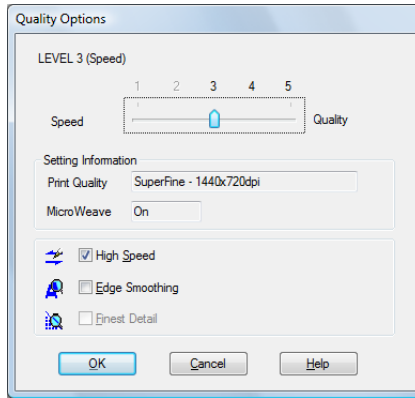


Note:

The available media types vary depending on the type of black ink cartridge currently installed (see page 44).

4. For the **Color** setting, select **Color** for any type of photographic printing. To print black and white photos using Advanced B&W Photo mode, see your on-screen *Reference Guide* for instructions.

- For the Print Quality setting, select **Speed**, **Quality**, or **Max Quality** (available with certain media types only), or select **Quality Options** to display a window like this:



Use the Speed/Quality slider to set from the following quality levels:

- **LEVEL 1** for fast printing with draft quality.
- **LEVEL 2** for everyday text and image printing.
- **LEVEL 3** for photos and graphics with good print quality and speed.
- **LEVEL 4** for photos and graphics with high print quality and slower speed.
- **LEVEL 5** for the best print quality and slowest print speed (best to use for canvas media).

Then select from the following additional options, and click **OK**:

- **High Speed** for fast, bidirectional printing at lower quality.
- **Edge Smoothing** to improve the quality of low-resolution images.
- **Finest Detail** for sharper edges on vector-based data including text, graphics, and line art. (This setting does not affect photographs.)

- Select **Automatic** as the Mode setting, then select one of the following:

- **Epson Standard** increases the contrast in images.
- **Adobe RGB** matches images colors to the Adobe RGB color standard. Use this setting if your source file was captured in Adobe RGB.

7. Choose the paper **Source** in which you loaded your paper:
 - **Sheet:** for sheets of paper loaded in the sheet feeder.
 - **Roll Paper:** for photos or panoramics up to 27 inches (68.6 cm) long. If desired, click **Print page frame** to print a cutting guideline around each photo.
 - **Roll Paper - Banner:** for photos or banners over 27 inches (68.6 cm) long. If desired, click **Save Roll Paper** to feed small amounts of roll paper between each banner.
 - **Manual - Roll:** for a sheet of compatible paper loaded in the single sheet guide (see page 8 for loading instructions).
 - **Manual - Front:** for thick media loaded in the front manual feed slot (see page 14).
 - **CD/DVD:** for a disc loaded in the CD/DVD tray guide (see page 31 for printing instructions).
8. Select the paper **Size** setting for the paper you loaded.

If you loaded roll paper or canvas media, create a custom paper size. Select **User Defined** in the **Size** menu, then click the **User Defined** button. Type a name for your custom size. For the **Paper Width**, enter **8.3** for A4- or **12.95** for Super B-size rolls. For the **Paper Height** enter the desired length up to 44 inches. Click **Save**, click **OK**, then select your custom paper size in the **Size** menu.

Note:

For roll paper, make sure the maximum width of your photo is 8.3 or 13 inches to fit in the width of your roll paper (set the margins to 0 in your application software).

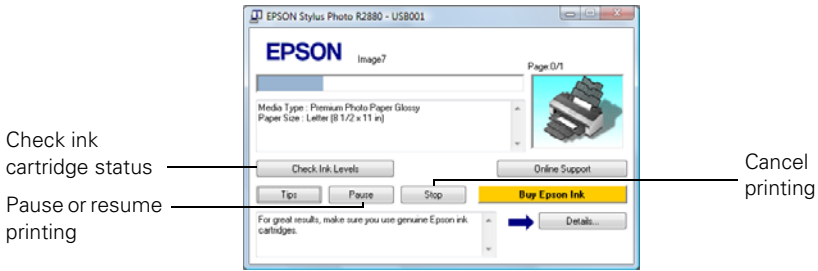
9. If you're printing borderless photos, select **Borderless**, if available. To adjust the borderless expansion setting click **Expansion**.
10. To reduce or enlarge your printout or print double-sided, click the **Page Layout** tab and select settings as necessary. (Click **Help** or see your on-screen *Reference Guide* for details.)

Note:

For color management instructions, see <http://www.epson.com/SPR2880Profiles>. For more information about print settings, click **Help** or see your on-screen *Reference Guide*.

11. Click **OK** to save your settings.
12. Click **OK** or **Print** to start printing.

This window appears and shows the progress of your print job.

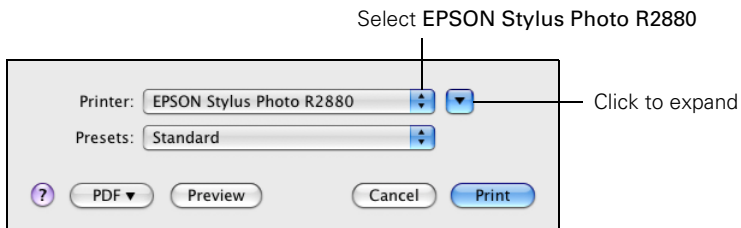


Note:

If you're printing on roll paper or canvas media, see page 13 for instructions on removing your printed photos and paper.

Printing With Mac OS X 10.5

1. Open a photo or document in a printing program, open the File menu, and select Print.
2. Select Epson Stylus Photo R2880 as the Printer setting.
3. Click the arrow to expand the Print window, if necessary.

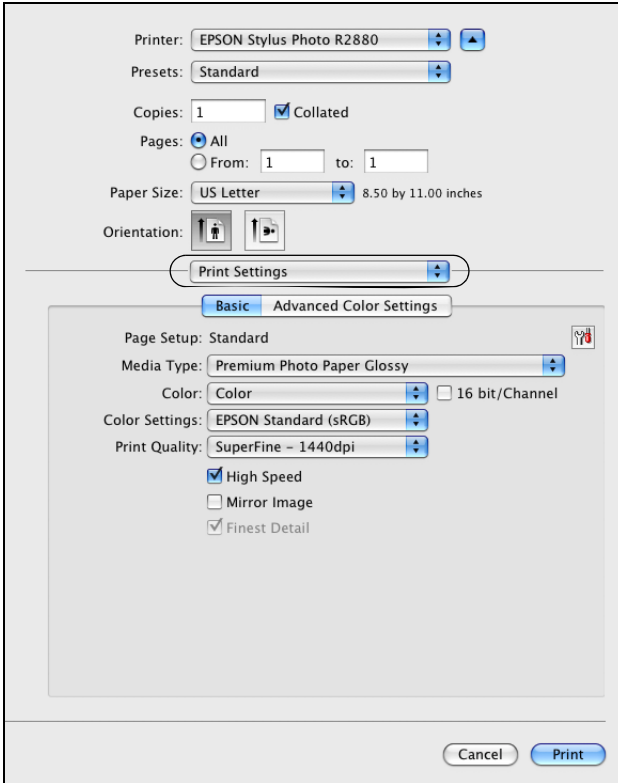


4. Select the **Paper Size** setting for the paper size and source you are using:
 - To print a borderless photo on paper loaded in the sheet feeder, select a paper size with a **Sheet Feeder - Borderless** option.
 - To print on roll paper or canvas media, create a custom paper size. Select **Manage Custom Sizes** in the Paper Size pop-up menu. Click the + (plus sign), double-click **Untitled** and give your paper size a name. For the **Width**, enter **8.3** for A4- or **12.95** for Super B-size rolls. For the **Height** enter the desired length up to 44 inches. Set the margins to **0** and click **OK**. Then select your custom paper size in the size menu.
5. Choose portrait or landscape as the **Orientation** setting for your document or photo.

Note:

If you don't see these settings in the Print window, check for them in your application or in the Page Setup window.

6. Select **Print Settings** from the pop-up menu.



Note:

In certain programs, you may need to select **Advanced** before you can select **Print Settings**. For more information about print settings, click the ? button.

7. Select the **Media Type** setting that matches the paper you loaded (see page 30).

Note:

The available media types vary depending on the type of black ink cartridge currently installed (see page 44).

8. For the **Color** setting, select **Color** for any type of photographic printing. To print black and white photos using Advanced B&W Photo mode, see your on-screen *Reference Guide* for instructions.

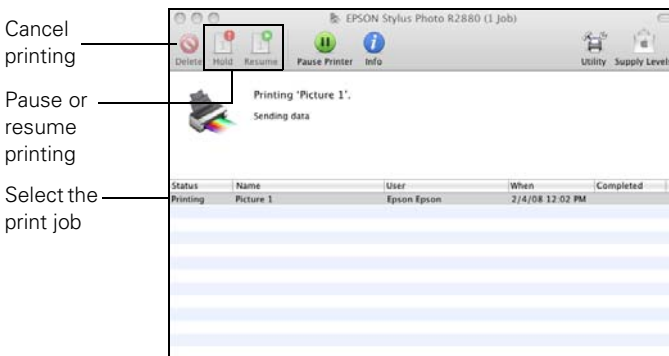
9. Select a **Print Quality** setting (available settings depend on selected media type):
- **Draft:** for fast printing with draft quality
 - **Fine - 720dpi:** for everyday text and image printing
 - **SuperFine - 1440dpi:** for photos and graphics with good print quality and speed
 - **Photo - 1440dpi:** for photos and graphics with high print quality and slower speed
 - **SuperPhoto - 5760dpi:** for the best print quality and slowest print speed (best to use for canvas media)

Note:

For color management instructions, see <http://www.epson.com/SPR2880Profiles>. For more information about print settings, click ? or see your on-screen *Reference Guide*.

10. Click **Print**.

11. To monitor your print job, click the printer icon in the dock (or click the **Print Center** icon and double-click **SP R2880** on the next screen).

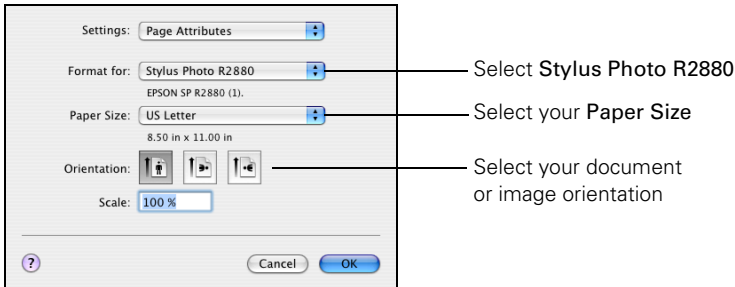


Note:

If you're printing on roll paper or canvas media, see page 13 for instructions on removing your printed photos and paper, if necessary.

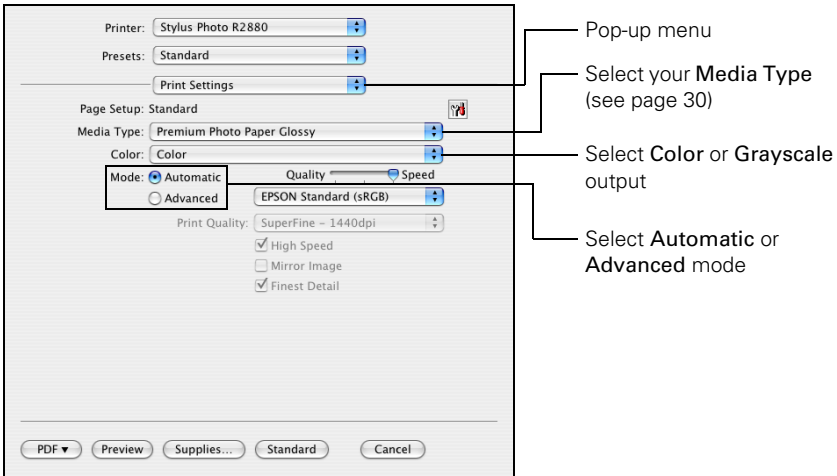
Printing With Mac OS X 10.3 to 10.4

1. Open a photo or document in a printing program, open the File menu, and select **Page Setup**.



2. Select **Stylus Photo R2880** as the Format For setting.
 3. Select the **Paper Size** setting for the paper size and source you are using:
 - To print a borderless photo on paper loaded in the sheet feeder, select a paper size with a **Sheet Feeder - Borderless** option.
 - To print on roll paper or canvas media, create a custom paper size. Select **Manage Custom Sizes** in the Paper Size pop-up menu. Click the + (plus sign), double-click **Untitled** and give your paper size a name. For the Width, enter **8.3** for A4- or **12.95** for Super B-size rolls. For the Height enter the desired length up to 44 inches. Set the margins to **0** and click **OK**. Then select your custom paper size in the size menu.
- Note:**
For roll paper, make sure the maximum width of your photo is set to 8.3 or 13 inches to fit in the width of your roll paper (set the margins to **0** in your application software).
- To print on paper loaded in the single sheet paper guide, select a paper size with a **Manual - Roll** or **Manual - Roll (Borderless)** option.
 - To print on paper loaded in the front manual feed slot, select a paper size with a **Manual Front** option.
4. Choose portrait or landscape as the Orientation setting for your document or photo.
 5. Click **OK**.
 6. Open the **File** menu and select **Print**.

7. Select **Stylus Photo R2880**, choose **Print Settings** from the pop-up menu, and select the following print settings:



Note:

In certain programs, you may need to select **Advanced** before you can select **Print Settings**. For more information about print settings, click the ? button.

8. Select the **Media Type** setting for your paper (see page 30).

Note:

The available media types vary depending on the type of black ink cartridge currently installed (see page 44).

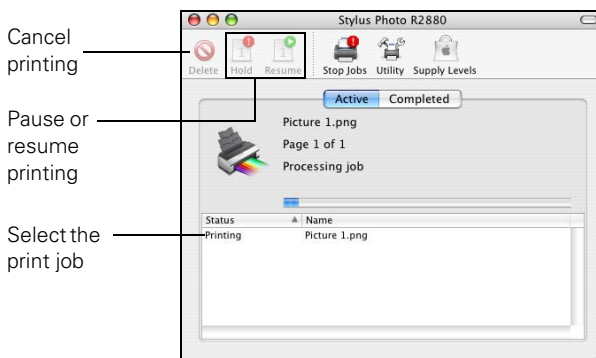
9. For the **Color** setting, select **Color** for any type of photographic printing. To print black and white photos using Advanced B&W Photo mode, see your on-screen *Reference Guide* for instructions.
10. For basic printing, select **Automatic** as the Mode setting and move the **Quality/Speed** slider to select higher quality or faster print speed.
11. For more printing options, click the **Advanced** button.

12. Select a **Print Quality** setting (available settings depend on selected media type):
 - **Draft:** for fast printing with draft quality
 - **Fine - 720dpi:** for everyday text and image printing
 - **SuperFine - 1440dpi:** for photos and graphics with good print quality and speed
 - **Photo - 1440dpi:** for photos and graphics with high print quality and slower speed
 - **SuperPhoto - 5760dpi:** for the best print quality and slowest print speed (best to use for canvas media)

Note:

For color management instructions, see <http://www.epson.com/SPR2880Profiles>. For more information about print settings, click ? or see your on-screen *Reference Guide*.

13. Click **Print**.
14. To monitor your print job, click the printer icon in the dock (or click the **Print Center** icon and double-click **SP R2880** on the next screen).



Note:

If you're printing on roll paper or canvas media, see page 13 for instructions on removing your printed photos and paper, if necessary.

Selecting the Correct Paper Type

Select the correct **Media Type** (Windows see page 20, Mac OS X 10.5 see page 25, or Mac OS X 10.3 to 10.4 see page 28) setting in your printer software so the ink coverage can be adjusted for your media.

For this paper/media	Select this setting
Epson Premium Photo Paper Glossy Epson Ultra Premium Photo Paper Glossy	Premium Photo Paper Glossy
Plain paper Epson Bright White Paper	Plain Paper/Bright White Paper
Epson Photo Paper Glossy	Photo Paper Glossy
Epson Presentation Paper Matte	Presentation Paper Matte
Epson Premium Photo Paper Semi-gloss	Premium Photo Paper Semi-Gloss
Epson Ultra Premium Photo Paper Luster Epson Premium Canvas Satin* Epson Exhibition Fiber Paper*	Ultra Premium Photo Paper Luster
Epson Ultra Premium Presentation Paper Matte	Ultra Premium Presentation Matte
Epson Premium Presentation Paper Matte Epson Premium Canvas Matte* Epson Photo Quality Self-adhesive Sheets Epson Iron-on Cool Peel Transfer Paper	Premium Presentation Paper Matte
Epson Velvet Fine Art Paper	Velvet Fine Art Paper
Epson Watercolor Paper Radiant White	Watercolor Paper - Radiant White
Epson UltraSmooth Fine Art Paper 325 gsm PremierArt Matte Scrapbook Photo Paper for Epson	UltraSmooth Fine Art Paper
Epson Premium Presentation Paper Matte Double-sided	Double-Sided Matte Paper
Ink jet-printable CD or DVD	CD/DVD
	CD/DVD Premium Surface

* For the best results on this paper, print using a premium ICC profile, downloadable from Epson at <http://www.epson.com/SPR2880Profiles>.

Printing on CDs and DVDs

You can use your R2880 and the Epson Print CD software that came with it to print label designs directly onto ink jet-printable CDs or DVDs.

Before you load a CD or DVD, be sure to clean the rollers inside the printer, as described below. Also burn files, music, or video onto your CD or DVD before printing on it to prevent errors.

Then follow the steps in these sections:

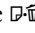
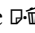
- “Loading a CD or DVD” on page 32
- “Printing on a CD or DVD” on page 34
- “Removing Your Printed CD/DVD” on page 35

Note:

If you're using discs where the printable area extends to within 0.16 inch (4 mm) of the edge of the center hole, you may need to adjust the **Inner/Outer Diameter** setting in the **File** menu of the Epson Print CD software. See the program's Help utility for instructions.

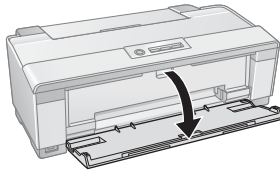
Cleaning the Rollers

Before you print on a CD or DVD, it's a good idea to clean the rollers inside the printer by feeding several sheets of plain paper through it.

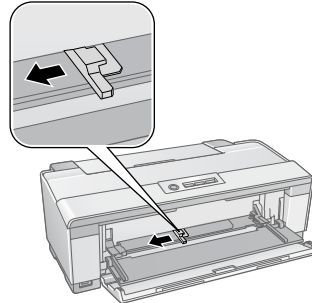
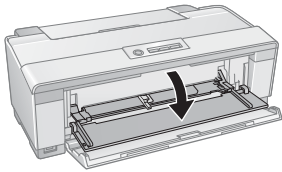
1. Turn on the printer.
2. Open the paper support and output tray.
3. Load several sheets of plain paper in the sheet feeder (see page 6).
4. Press the  paper button to feed the paper through the printer.
5. Press the  paper button again to eject the paper.
6. Feed several sheets of paper in this way to completely clean the rollers.

Loading a CD or DVD

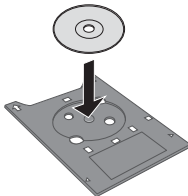
1. First burn files, music, or video onto your CD/DVD before printing on it to prevent errors.
2. Turn on the printer.
3. Clean the rollers inside the printer (see page 31).
4. Remove any paper loaded in the sheet feeder and remove the single sheet guide, if it is installed. Also close the paper support.
5. Open the output tray, but do not pull out the extensions.



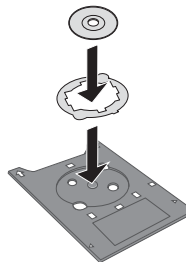
6. Open the front manual feed slot cover and slide the edge guide left.



7. Place your disc on the CD/DVD tray with the label side up.



12-cm discs



8-cm discs

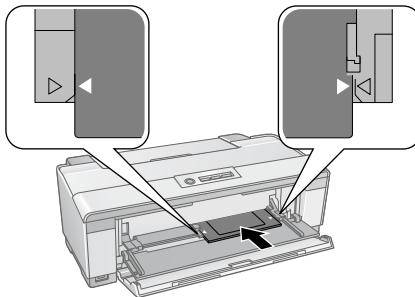
Note:

For small 8-cm discs, place the adapter on the tray and then place the disc in the adapter.

8. Insert the tray into the front manual feed slot. Then slide the edge guide against the left side of the CD/DVD tray.



9. Make sure that the CD/DVD tray is beneath the guide rails, then slide the tray in until the arrows are aligned.



When you send your CD/DVD print job to the printer, it automatically places the disc in the correct print position and ejects it automatically when printing finishes.

Caution:

Do not turn the R2880 on or off with a CD or DVD loaded in it. Always remove the disc first (see page 35).

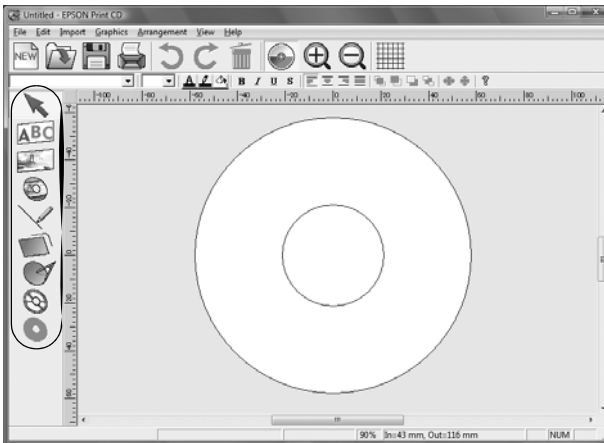
Printing on a CD or DVD

When you installed the software for the R2880, you installed the Epson Print CD program for printing label designs directly onto CDs or DVDs. Follow these steps to open the program and print on the disc you loaded in the printer:

1. Do one of the following to start Epson Print CD:

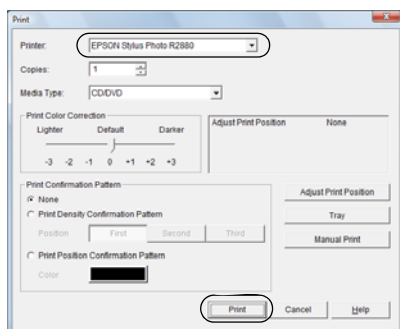
Windows: Double-click the EPSON Print CD icon on your desktop.

Mac OS X: Open the Applications folder, open the EPSON Print CD folder, and double-click EPSON Print CD.

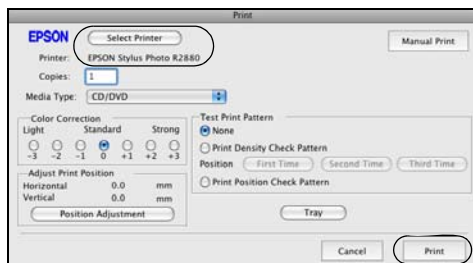


2. Follow the instructions in the on-screen *Reference Guide* to design your disc label. You can use the tools on the screen to add text and provided background designs, or add your own designs or photos.

- When you're ready to print on the disc, open the **File** menu and select **Print**. You see one of these windows:



Windows



Mac OS X

- Select **EPSON Stylus Photo R2880** (Windows and Mac OS X 10.5) or **Stylus Photo R2880** (Mac OS X 10.3 to 10.4), if necessary.
- Click **Print**.

Removing Your Printed CD/DVD

After your CD or DVD is printed, the tray ejects partially from the R2880.

Pull out the tray and remove the disc.

Caution:

Do not turn the R2880 on or off with a CD or DVD loaded in it. Always remove the disc first.

After printing, handle the printed CD or DVD carefully. You may need to wait up to 24 hours for the ink to dry fully before inserting it in a drive. Keep printed discs away from moisture and direct sunlight.

If you need to adjust the print position or print quality, see your on-screen *Reference Guide* for instructions.

Maintaining Your Printer


Follow the steps in these sections to keep the R2880 working at its best:

- “Checking and Cleaning the Print Head” below
- “Checking and Aligning the Print Head” on page 37
- “Checking the Ink Cartridge Status” on page 38
- “Replacing Ink Cartridges” on page 40
- “Switching Black Ink Cartridge Types” on page 44

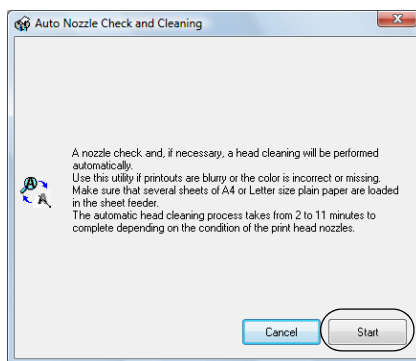
Checking and Cleaning the Print Head

You can check and clean the print head nozzles automatically using the Auto Nozzle Check and Cleaning utility in your printer software. It prints a check pattern that your printer then reads to see if you have any clogged nozzles, which it then cleans, if necessary.

1. Load a few sheets of plain paper in the sheet feeder (see page 6).
2. Do one of the following:

Windows: Right-click the  icon in the bottom right corner of your screen (the taskbar) and select **Auto Head Cleaning**.

Mac OS X: Open the Applications folder, open the **EPSON Printer Utility3**, select **SP R2880**, and click **OK**. Then select **Auto Nozzle Check and Cleaning**.



3. Click **Start** and follow the on-screen instructions to allow the printer to print and examine the nozzle check pattern. If necessary, the printer cleans the print head, and may print and check the nozzle check pattern a few times.

If nozzles are still clogged, you see a message telling you to clean the print head manually. See the on-screen *Reference Guide* for instructions.

Note:

If you don't see any improvement after cleaning the print head four times, turn off your printer and wait at least six hours to let any dried ink soften. Then try printing again.

If you do not use your R2880 often, it is a good idea to print a few pages at least once a month to maintain good print quality.

Checking and Aligning the Print Head


If your printouts become grainy or blurry, or you see dark or light bands across them, you may need to align the print head.

It's best to run the automatic alignment utility first to let the printer check and align the print head, if necessary. If you still notice alignment problems, you can align the print head manually.

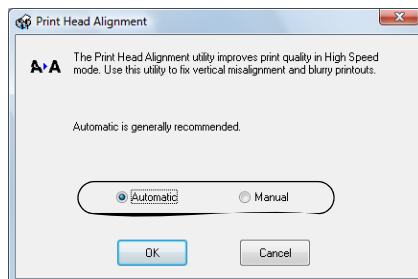
Note:

Banding may also occur if your print head nozzles need cleaning (see page 36).

1. Load a few sheets of Epson Presentation Paper Matte (or the photo paper you have on hand) in the sheet feeder (see page 6). It's best to use matte or photo paper for the most accurate alignment.
2. Do one of the following:

Windows: Right-click the  icon in the bottom right corner of your screen (the taskbar) and select **Print Head Alignment**.

Mac OS X: Open the Applications folder, open the EPSON Printer Utility3, select SP R2880, and click OK. Then select **Print Head Alignment**.



3. To have the printer check and align the print head automatically, click **Automatic**, then click **OK**. Follow the on-screen instructions to print the alignment check patterns and align the print head as necessary.

To align the print head manually, click the **Manual** button and follow the on-screen instructions, or see the on-screen *Reference Guide* for detailed steps.

Checking the Ink Cartridge Status

Your R2880 will let you know when an ink cartridge is low or expended in the following ways:


- The Δ ink light flashes when ink is low in one or more cartridges.
- The Δ ink light stays on when an ink cartridge is expended. You cannot print when an ink cartridge is expended even if the other cartridges are not expended. Replace any expended cartridges before printing.
- Your computer screen displays a message when you try to print. This window can optionally display ink offers and other updates retrieved from an Epson website.

Note:

On a Windows computer that is connected to the Internet, you may see a screen asking if you want to receive Epson offers the first time you try to print when ink is low. Click **Accept** or **Decline**. To disable checking for ink offers or updates from Epson, see the instructions in your on-screen *Reference Guide*.

To check the ink cartridge status at anytime, do one of the following:

Windows:

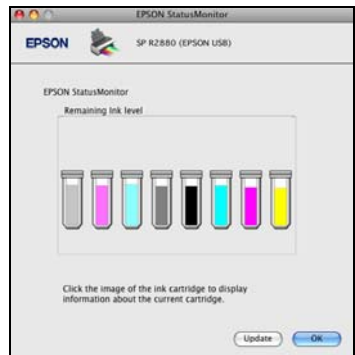
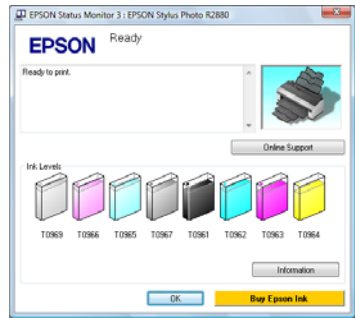
Double-click the  icon in the bottom right corner of your screen (the taskbar).

You see the screen to the right.

Mac OS X:

1. Open the Applications folder.
2. Open the EPSON Printer Utility³.
3. Select SP R2880, click OK, and select EPSON StatusMonitor.

You see the screen to the right.



Replacing Ink Cartridges

You can purchase genuine Epson ink and paper at Epson Supplies Central at www.epson.com/ink3 (U.S. sales) or www.epson.ca (Canadian sales). You can also purchase supplies from an Epson authorized reseller. To find the nearest one, call 800-GO-EPSON (800-463-7766).

Use the following list when you order or purchase new ink cartridges:

Ink color	Part number	Part number on software screens
Light Light Black	96	T0969
Vivid Light Magenta	96	T0966
Light Cyan	96	T0965
Light Black	96	T0967
Photo Black	96	T0961
Matte Black	96	T0968
Cyan	96	T0962
Vivid Magenta	96	T0963
Yellow	96	T0964

Note:

We recommend that you use genuine Epson cartridges and do not refill them. The use of other products may affect your print quality and could result in printer damage.

Yields vary considerably based on images printed, print settings, paper type, frequency of use, and temperature. For print quality, a small amount of ink remains in the cartridge after the “replace cartridge” indicator comes on. The printer ships with full cartridges and part of the ink from the first cartridges is used for priming the printer.

For best printing results, use up a cartridge within six months of opening the package.

Caution:

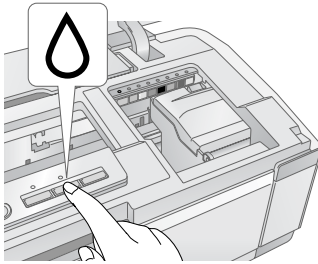
Do not open ink cartridge packages until you are ready to install the ink. Cartridges are vacuum packed to maintain reliability.

Leave your old cartridges in the R2880 until you are ready to replace them to prevent the print head nozzles from drying out.

Remove the CD/DVD tray before replacing ink cartridges.

Make sure you have a new ink cartridge before you begin. You must install new cartridges immediately after removing the old ones.

1. Remove the CD/DVD tray or thick media and close the front manual feed slot cover before replacing ink. If you have roll paper or canvas media loaded in the printer, remove it to prevent ink marks on the paper (see page 13).
2. Open the printer cover.
3. Press the Δ ink button to move the print head to the ink replacement position. If a cartridge is low or expended, the light above the cartridge flashes or stays on.



Caution:

Don't move the print head by hand or touch the flat white cable behind the print head to avoid damaging your printer.



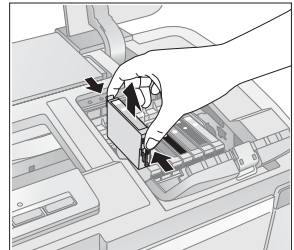
4. Open the cartridge cover.



5. Squeeze the tab on the cartridge and lift the cartridge straight up to remove it. Dispose of it carefully. Do not take the used cartridge apart or try to refill it.

Warning:

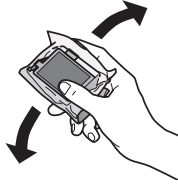
If ink gets on your hands, wash them thoroughly with soap and water. If ink gets into your eyes, flush them immediately with water. Keep ink cartridges out of the reach of children.



- Before opening the cartridge package, shake the package four or five times.

Note:

All cartridges make a clicking sound when you shake them.



Caution:

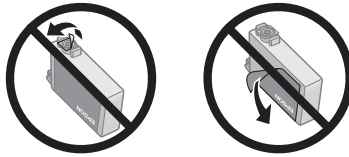
Do not shake the cartridges after opening the packages or ink will leak.

- Remove the cartridge from the package, but be careful not to touch the green chip on the cartridge.
- Remove the yellow tape from the bottom of the cartridge.

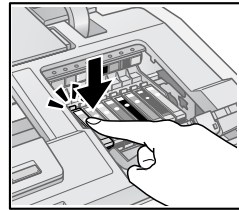
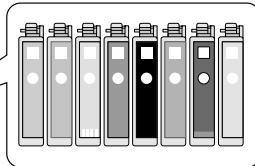
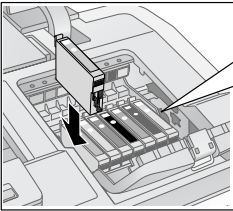


Caution:

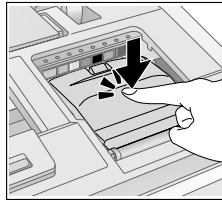
Do not remove any other labels or seals, or ink will leak.



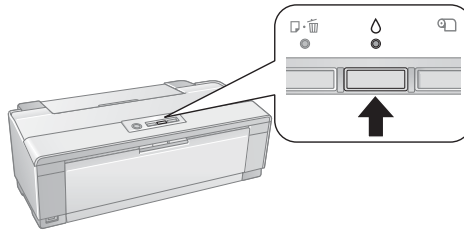
- Insert the new cartridge into the holder and push it down until it clicks into place.



- Once you replace all the necessary cartridges, close the cartridge cover and push it down until it clicks into place.



- Close the printer cover.
- Press the Δ ink button to begin charging the ink. This takes about 2 1/2 minutes. The C power light flashes as the ink charges.



When the C power light stops flashing and the Δ ink light goes out, ink charging is finished.

Caution:

Never turn off the R2880 while ink is charging or you'll waste ink.

If the Δ ink light is flashing, press the Δ ink button, then press down all the cartridges securely.

If you remove a low or expended ink cartridge, you cannot reinstall and use the cartridge.

Switching Black Ink Cartridge Types

Your printer comes with a Matte Black (T0968) and Photo Black (T0961) ink cartridge for printing. Only one can be installed in the printer at one time. Decide which media you will print on. Then, if necessary, switch the cartridge to match the Media Type (see page 45).

Use the Matte Black ink cartridge with the following media types:

- Plain Paper
- Bright White Paper
- Presentation Paper Matte
- Premium Presentation Paper Matte
- Epson Premium Presentation Paper Matte Double-sided
- Ultra Premium Presentation Paper Matte
- Velvet Fine Art Paper
- Watercolor Radiant White
- UltraSmooth Fine Art Paper
- Premium Canvas Matte
- Photo Quality Self-adhesive Sheets
- PremierArt Matte Scrapbook Photo Paper for Epson

Note:

You cannot select these paper types when the Photo Black ink cartridge is installed.

Use the Photo Black cartridge with the following media types:

- Premium Photo Paper Glossy
- Ultra Premium Photo Paper Glossy
- Premium Photo Paper Semi-gloss
- Ultra Premium Photo Paper Luster
- Premium Canvas Satin
- Exhibition Fiber Paper

Note:

You cannot select these paper types when the Matte Black ink cartridge is installed.

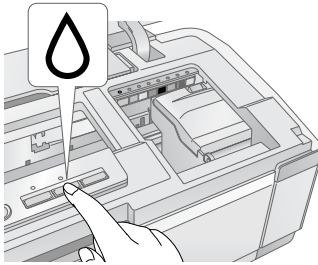
Switching the Black Ink Cartridge

Make sure you have the other black ink cartridge handy before you begin. You must install the other cartridge immediately after removing the installed one from the printer.

Caution:

If you remove a low or expended ink cartridge, you cannot reinstall and use the cartridge.

1. Remove the CD/DVD tray or thick media and close the front manual feed slot cover before replacing ink. If you have roll paper or canvas media loaded in the printer, remove it to prevent ink marks on the paper (see page 13).
2. Open the printer cover.
3. Press the Δ ink button to move the print head to the ink replacement position. If a cartridge is low or expended, the light above the cartridge flashes or stays on.

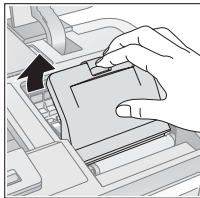


Caution:

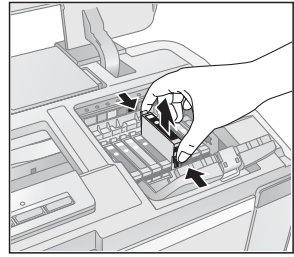
Don't move the print head by hand or touch the flat white cable behind the print head to avoid damaging your printer.



4. Open the cartridge cover.



5. Squeeze the tab on the black ink cartridge and lift the cartridge straight up to remove it. Store this cartridge in a plastic bag for later use.



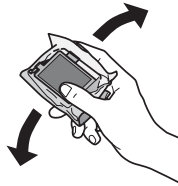
Warning:

If ink gets on your hands, wash them thoroughly with soap and water. If ink gets into your eyes, flush them immediately with water. Keep ink cartridges out of the reach of children.

6. If you're switching the cartridge with a new one, shake the cartridge package four or five times before opening the package.

Note:

The cartridges make a clicking sound when you shake them.



Caution:

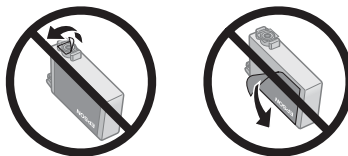
Do not shake the cartridges after opening the packages or ink will leak.

7. If necessary, remove the cartridge from the package, but be careful not to touch the green chip on the cartridge.
8. Remove the yellow tape from the bottom of the cartridge.

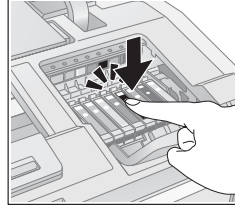
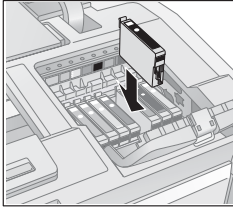


Caution:

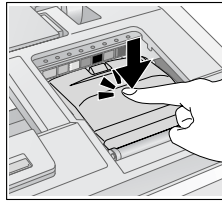
Do not remove any other labels or seals, or ink will leak.



9. Insert the black ink cartridge into the holder and push it down until it clicks into place.

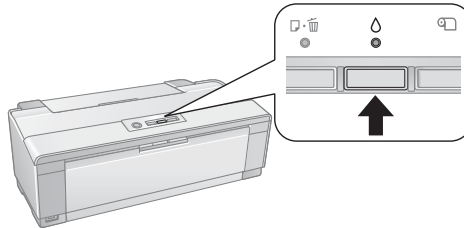


10. Close the cartridge cover and push it down until it clicks into place.



11. Close the printer cover.

12. Press the Δ ink button to begin charging the ink. This takes about 2 1/2 minutes. The U power light flashes as the ink charges.



When the U power light stops flashing and the Δ ink light goes out, ink charging is finished.

Caution:


Never turn off the R2880 while ink is charging or you'll waste ink.

If the Δ ink light is flashing, press the Δ ink button, then press down all the cartridges securely.

Select the Black Ink Cartridge

Once you've swapped the black ink cartridges, you need to select it in the printer driver before printing. Do one of the following:

Windows

1. Right-click the  icon in the bottom right corner of your screen (the taskbar).
2. Select **Printer Settings**. You see the printer settings window:
3. Select the **Utility** tab in the printer driver, then select **Print and Option Information**.
4. If necessary, select the installed black ink cartridge and click **OK**.

Mac OS X 10.3 to 10.5

1. Open the **Applications** folder on your hard drive.
2. Open **EPSON Printer Utility**.
3. Select **SP R2880** and click **OK**.
4. Select **EPSON StatusMonitor**.

Click the **Update** button to update the ink cartridge and Media Type settings in the printer driver.

Solving Problems


Check the status of the printer lights to diagnose the cause of most problems (see page 50), or check the solutions beginning on page 51 for more information.

Open your on-screen *Epson Information Center* for detailed help and easy access to Epson's support website, FAQs, paper and ink purchasing, and *Reference Guide*.

Checking for Software Updates

Periodically, it's a good idea to check Epson's support website for free updates to your Epson Stylus Photo R2880 Series software. Open your on-screen *Epson Information Center* and select **Download the Latest Software** or visit Epson's support website at epson.com/support (U.S.) or epson.ca (Canada).

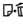



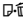
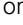



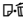


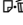



With Windows, you can select **Driver Update** on the **Utility** tab in the printer settings window. You can also click **Start** or , select **Programs** or **All Programs**, select **EPSON**, and click **EPSON Stylus Photo R2880 Driver Update**.

Checking the Printer Lights

Check the status of the printer lights to solve the most common problems.



Light status	Problem and solution
<p>⏏ paper on</p>	<p>Paper may be out or multiple sheets may have fed into the sheet feeder. Load paper, if necessary (see page 6), and press the ⏏ paper button.</p>
	<p>Roll paper or canvas media may be out. See page 11 to load roll paper.</p>
	<p>The CD/DVD tray may not be inserted. See page 32 to load a CD or DVD.</p>
	<p>If you're printing on thick media, the media is not inserted. Insert the thick media and press the ⏏ paper button.</p>
<p>⏻ power and ⏏ paper flashing</p>	<p>Paper may have jammed in the sheet feeder, rear manual feed slot, front manual feed slot, or roll paper slot. Sheet feeder or rear manual feed slot: Press the ⏏ paper button to eject any jammed sheets, then open the printer cover and remove any paper jammed inside. Reload paper and press the ⏏ paper button again to clear the error. Front manual feed slot: Gently pull out the paper and press the ⏏ paper button to clear the error. Roll Paper Slot: Cut off any printed roll paper or canvas media, then remove (see page 13) and reload (see page 11) the paper.</p>
	<p>The CD/DVD tray may be unable to eject. Gently pull out the CD/DVD tray and press the ⏏ paper button. See page 32 to reload the tray.</p>
	<p>The printer cover may be open. Close the printer cover to continue. (Leaving the printer cover open stops or prevents printing.)</p>
<p>⬇ ink on</p>	<p>An ink cartridge is expended or not installed correctly, or is not compatible with the printer. Replace or reinstall the cartridge (see page 40).</p>
<p>⬇ ink flashing</p>	<p>Ink in a cartridge is low. You can continue printing, or check which cartridge is low (see page 38) and replace it (see page 40).</p>

Light status	Problem and solution
<p>  paper flashing  ink flashing fast </p>	<p>The front manual feed slot cover is open while printing from paper loaded in the sheet feeder. Remove paper loaded to print on thick media or a CD/DVD or close the front manual feed slot cover to print on paper loaded in the sheet feeder (see page 32 to locate the front manual feed slot cover). Press the  paper button to clear the error.</p>
<p>  power on  paper and  ink flashing or flashing alternately </p>	<p>An unsupported device is connected to the  external USB port. Connect only a PictBridge compatible digital camera to the  external USB port (see the on-screen <i>Reference Guide</i>).</p>
<p>  power off  paper and  ink flashing alternately </p>	<p>Parts inside the R2880 Series are at the end of their service life or an unknown error has occurred. Contact Epson for help (see page 54).</p>
<p>  power off  paper and  ink flashing fast </p>	<p>The print head is obstructed by paper or other foreign material. Turn off the printer, remove any obstructions, and turn it back on. If the error persists, contact Epson (see page 54).</p>

Problems and Solutions

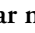
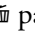
Check the solutions below if you're having trouble using your printer.

Printing Problems


- Make sure your paper is loaded printable side up, short edge first, and against the right side with the edge guide against it (see page 6 and page 8).
- Don't load paper above the arrow mark inside the sheet feeder edge guide. Load only one sheet of compatible paper using the single sheet guide (see page 8).
- Make sure the paper size settings in the printer software are correct for the paper you loaded.
- If the  power and  paper lights are flashing and printing has stopped, make sure the printer cover is closed. Leaving the printer cover open stops or prevents printing.

Paper Feeding Problems

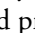
- If paper doesn't feed into the sheet feeder, remove the paper and fan the stack of paper to separate the sheets. Reload paper against the right side and slide the edge guide against it. Also, do not load too many sheets in the sheet feeder at once (see page 6) and make sure the printer cover is closed.
- If paper loaded using the single sheet guide doesn't feed, make sure you installed the guide correctly and guided the paper all the way into the printer (see page 8). Also make sure the printer cover is closed.
- If roll paper doesn't feed, cut the end of it straight across and uncurl the end by rolling it backward, if necessary. Then reload the paper carefully (see page 11) and make sure the printer cover is closed.
- If thick media doesn't feed, gently remove the paper and turn off the printer. Turn the printer back on and reload the paper (see page 14).
- If paper is jammed, try the following, depending on how you're printing:

Sheet feeder or rear manual feed slot: Press the  paper button to eject any jammed sheets, then open the printer cover and remove any paper jammed inside. Press the  paper button again to clear the error, then reload paper.

Roll paper slot: Cut off any printed roll paper or canvas media, then remove (see page 13) and reload (see page 11) the paper.

Front manual feed slot: Gently pull out the paper and press the  paper button to clear the error.

CD/DVD Printing Problems

- If the CD/DVD tray won't load or jams in the printer, gently pull out the CD/DVD tray and press the  paper button, if it is flashing. Reload the CD/DVD tray, making sure to insert the tray correctly in the tray guide and align the arrows (see page 32). Also make sure the printer cover is closed.
- If your image is not positioned correctly on the disc or does not cover the printable area correctly, you may need to adjust the printing position using the Epson Print CD software. See the on-screen *Reference Guide* for instructions.

- If ink smears on your disc, make sure you're printing on ink jet-printable CDs or DVDs and that the surface of the disc is dry. Handle printed discs carefully and let them dry for 24 hours before inserting them in a drive. If necessary, you can adjust the print quality using Epson Print CD software. See the on-screen *Reference Guide* for instructions.

Print Quality Problems

- For the best print quality, use Epson papers (see page 16) and genuine Epson ink cartridges (see page 40).
- Load the paper printable side up (usually the whiter, brighter, or glossy side).
- Make sure your paper isn't damp or curled.
- Use a support sheet with special paper (sheet feeder only) or load one sheet at a time.
- Make sure the type of paper you loaded matches the paper size and paper type settings in your printer software (see page 30).
- Remove sheets from the output tray as they eject. Let your prints dry separately for at least 12 hours before framing or placing in a protective sheet. If you need to stack them, place a sheet of plain paper between each print.
- If you notice light or dark bands across your printouts or they are too faint, you may need to clean the print head. Run the Auto Nozzle Check and Cleaning utility to automatically check and clean the print head (see page 36).
- If you notice jagged vertical lines, run the Print Head Alignment utility to automatically check and align the print head (see page 37).
- The ink cartridges may be low on ink. Check your cartridge status (see page 38) and replace cartridges, if necessary (see page 40).

Where To Get Help

Epson Technical Support

Internet Support

Visit Epson's support website at epson.com/support and select your product for solutions to common problems. You can download drivers and documentation, get FAQs and troubleshooting advice, or e-mail Epson with your questions.

Speak to a Support Representative

Before you call Epson for support, please have the following information ready:

- Product name (Epson Stylus Photo R2880 Series)
- Product serial number (located on the label in back)
- Proof of purchase (such as a store receipt) and date of purchase
- Computer configuration
- Description of the problem

Then call:

- U.S.: (562) 276-7272, 6 AM to 6 PM, Pacific Time, Monday through Friday
- Canada: (905) 709-2567, 6 AM to 6 PM, Pacific Time, Monday through Friday

Days and hours of support are subject to change without notice. Toll or long distance charges may apply.



Purchase Supplies and Accessories

You can purchase genuine Epson ink and paper at Epson Supplies Central at www.epson.com/ink3 (U.S. sales) or www.epson.ca (Canadian sales). You can also purchase supplies from an Epson authorized reseller. To find the nearest one, call 800-GO-EPSON (800-463-7766).

Notices

Important Safety Instructions

Before using your R2880, read and follow these safety instructions:

- Be sure to follow all warnings and instructions marked on the R2880.
- Use only the type of power source indicated on the R2880 label.
- Place the R2880 near a wall outlet where the plug can be easily unplugged.
- If you won't be using the R2880 for a long period, unplug the power cord from the electrical outlet.
- Always turn off the R2880 using the  power button, and wait until the  power light stops flashing before unplugging the printer or cutting off power to the electrical outlet.
- Avoid plugging the R2880 into an outlet on the same circuit as a photo copier or air control system that regularly switches on and off, or on an outlet controlled by a wall switch or timer.
- Do not let the power cord become damaged or frayed.
- If you use an extension cord with the R2880, make sure the total ampere rating of the devices plugged into the extension cord does not exceed the cord's ampere rating. Also, make sure the total ampere rating of all devices plugged into the wall outlet does not exceed the wall outlet's ampere rating.
- Avoid locations that are subject to rapid changes in heat or humidity, shocks or vibrations, or dust.
- Leave enough room around the R2880 for sufficient ventilation. Do not block or cover openings in the R2880 case or insert objects through the slots.
- Do not place the R2880 near a radiator or heating vent or in direct sunlight.
- Do not use aerosol products that contain flammable gases inside or around the R2880. Doing so may cause fire.
- Place the R2880 on a flat, stable surface that extends beyond its base in all directions. It will not operate properly if it is tilted or at an angle.
- Make sure the R2880 is at least 4 inches (10 cm) away from the wall.
- Do not touch the flat white cable inside the R2880.
- Do not spill liquid on the R2880.

- Except as specifically explained in your documentation, do not attempt to service the R2880 yourself.
- Unplug the R2880 and refer servicing to qualified service personnel under the following conditions: if the power cord or plug is damaged; if liquid has entered the product; if the product has been dropped or the case damaged; if the product does not operate normally or exhibits a distinct change in performance. Adjust only those controls that are covered by the operating instructions.
- When storing or transporting the R2880, do not tilt it, stand it on its side, or turn it upside down; otherwise ink may leak from the cartridges.

Ink Cartridge Safety Instructions

- Keep ink cartridges out of the reach of children and do not drink the ink.
- Be careful when you handle used ink cartridges; there may be ink remaining around the ink supply port. If ink gets on your skin, wash it off with soap and water. If it gets in your eyes, flush them immediately with water.
- Do not put your hand inside the R2880 or touch any cartridges during printing.
- Install a new ink cartridge immediately after removing an expended one. Leaving cartridges uninstalled can dry out the print head and may prevent the R2880 from printing.
- If you remove an ink cartridge for later use, protect the ink supply area from dirt and dust and store it in the same environment as the R2880. Note that there is a valve in the ink supply port, making covers or plugs unnecessary, but care is needed to prevent the ink from staining items that the cartridge touches. Do not touch the ink cartridge ink supply port or surrounding area. Do not store the cartridge upside down.

Epson America, Inc., Limited Warranty

What Is Covered: Epson America, Inc. (“Epson”) warrants to the original retail purchaser that the Epson printer covered by this limited warranty statement, if purchased and operated only in the United States or Canada, will be free from defects in workmanship and materials for a period of one (1) year from the date of original purchase. For warranty service, you must provide proof of the date of original purchase.

What Epson Will Do To Correct Problems: Should your Epson printer prove defective during the warranty period, please call the Epson ConnectionSM at (562) 276-7272 (U.S.) or (905) 709-2567 (Canada) for warranty repair instructions and return authorization. An Epson service technician will provide telephone diagnostic service to determine whether the printer requires service. If service is needed, Epson will, at its option, exchange or repair the printer without charge for parts or labor. If Epson authorizes an exchange for the defective unit, Epson will ship a replacement printer to you, freight prepaid, so long as you use an address in Canada or the U.S. (excluding Puerto Rico and U.S. Possessions). Shipments to other locations will be made freight collect. You are responsible for securely packaging the defective unit and returning it to Epson within five (5) working days of receipt of the replacement. Epson requires a debit or a credit card number to secure the cost of the replacement printer in the event that you fail to return the defective one. If your printer is being repaired, Epson will direct you to send your printer to Epson or its authorized service center, where the printer will be fixed and sent back to you. You are responsible for packing the printer and for all costs to and from the Epson authorized service center. When warranty service involves the exchange of the printer or a part, the item replaced becomes Epson property. The replacement printer or part may be new or refurbished to the Epson standard of quality, and, at Epson’s option, may be another model of like kind and quality. Epson’s liability for replacement of the covered printer will not exceed the original retail selling price of the covered printer. Exchange products and parts assume the remaining warranty period of your original product covered by this limited warranty.

What This Warranty Does Not Cover: This warranty covers only normal use in the United States and Canada. Using this product for continuous production or similar high duty purposes is not considered normal use; damage, maintenance or service from such use will not be covered under this warranty. This warranty is not transferable. This warranty does not cover any color change or fading of prints or reimbursement of materials or services required for reprinting. This warranty does not cover damage to the Epson product caused by parts or supplies not manufactured, distributed or certified by Epson. This warranty does not cover ribbons, ink cartridges or third party parts, components, or peripheral devices added to the Epson product after its shipment from Epson, e.g., dealer or user-added boards or components. Epson is not responsible for warranty service should the Epson label or logo or the rating label or serial number be removed or should the product fail to be properly maintained or fail to function properly as a result of misuse,

abuse, improper installation, neglect, improper shipping, damage caused by disasters such as fire, flood, and lightning, improper electrical current, software problems, interaction with non-Epson products, or service other than by an Epson Authorized Servicer. If a claimed defect cannot be identified or reproduced, you will be held responsible for the costs incurred.

THE WARRANTY AND REMEDY PROVIDED ABOVE ARE EXCLUSIVE AND IN LIEU OF ALL OTHER EXPRESS OR IMPLIED WARRANTIES INCLUDING, BUT NOT LIMITED TO, THE IMPLIED WARRANTIES OF MERCHANTABILITY, NON-INFRINGEMENT OR FITNESS FOR A PARTICULAR PURPOSE. SOME LAWS DO NOT ALLOW THE EXCLUSION OF IMPLIED WARRANTIES. IF THESE LAWS APPLY, THEN ALL EXPRESS AND IMPLIED WARRANTIES ARE LIMITED TO THE WARRANTY PERIOD IDENTIFIED ABOVE. UNLESS STATED HEREIN, ANY STATEMENT OR REPRESENTATIONS MADE BY ANY OTHER PERSON OR FIRM ARE VOID. EXCEPT AS PROVIDED IN THIS WRITTEN WARRANTY, NEITHER EPSON AMERICA, INC. NOR ITS AFFILIATES SHALL BE LIABLE FOR ANY LOSS, INCONVENIENCE, OR DAMAGE, INCLUDING DIRECT, SPECIAL, INCIDENTAL OR CONSEQUENTIAL DAMAGES, RESULTING FROM THE USE OR INABILITY TO USE THE EPSON PRODUCT, WHETHER RESULTING FROM BREACH OF WARRANTY OR ANY OTHER LEGAL THEORY.

In Canada, warranties include both warranties and conditions.

Some jurisdictions do not allow limitations on how long an implied warranty lasts, and some jurisdictions do not allow the exclusion or limitation of incidental or consequential damages, so the above limitations and exclusions may not apply to you. This warranty gives you specific legal rights and you may have other rights which vary from jurisdiction to jurisdiction.

To find the Epson Authorized Reseller nearest you, visit our website at:
<http://www.epson.com>.

To find the Epson Customer Care Center nearest you, visit
<http://www.epson.com/support>.

You can also write to:
Epson America, Inc., P.O. Box 93012, Long Beach, CA 90809-3012

Declaration of Conformity

According to 47CFR, Part 2 and 15 for: Class B Personal Computers and Peripherals;
and/or CPU Boards and Power Supplies used with Class B Personal Computers:

We: Epson America, Inc.
Located at: MS 3-13
3840 Kilroy Airport Way
Long Beach, CA 90806
Telephone: (562) 290-5254

Declare under sole responsibility that the product identified herein, complies with 47CFR Part 2 and 15 of the FCC rules as a Class B digital device. Each product marketed is identical to the representative unit tested and found to be compliant with the standards. Records maintained continue to reflect the equipment being produced can be expected to be within the variation accepted, due to quantity production and testing on a statistical basis as required by 47CFR §2.909. Operation is subject to the following two conditions: (1) this device may not cause harmful interference, and (2) this device must accept any interference received, including interference that may cause undesired operation.

Trade Name: Epson
Type of Product: Ink jet printer
Model: B431B

FCC Compliance Statement

For United States Users

This equipment has been tested and found to comply with the limits for a Class B digital device, pursuant to Part 15 of the FCC Rules. These limits are designed to provide reasonable protection against harmful interference in a residential installation. This equipment generates, uses, and can radiate radio frequency energy and, if not installed and used in accordance with the instructions, may cause harmful interference to radio or television reception. However, there is no guarantee that interference will not occur in a particular installation. If this equipment does cause interference to radio and television reception, which can be determined by turning the equipment off and on, the user is encouraged to try to correct the interference by one or more of the following measures:

- Reorient or relocate the receiving antenna.
- Increase the separation between the equipment and receiver.
- Connect the equipment into an outlet on a circuit different from that to which the receiver is connected.
- Consult the dealer or an experienced radio/TV technician for help.

WARNING

The connection of a non-shielded equipment interface cable to this equipment will invalidate the FCC Certification of this device and may cause interference levels which exceed the limits established by the FCC for this equipment. It is the responsibility of the user to obtain and use a shielded equipment interface cable with this device. If this equipment has more than one interface connector, do not leave cables connected to unused interfaces. Changes or modifications not expressly approved by the manufacturer could void the user's authority to operate the equipment.

For Canadian Users

This Class B digital apparatus complies with Canadian ICES-003.

Cet appareil numérique de la classe B est conforme à la norme NMB-003 du Canada.

EPSON[®]
EXCEED YOUR VISION



411714300

CPD-25204R1
Printed in XXXXXX