

# CAREER PASSPORT

REVISED March 20, 2020

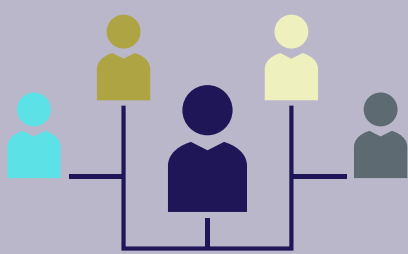
Spring 2020 - EGR 111 and CS 203

## FIRST HANDSHAKE & LINKEDIN



- Activate your UP Handshake Account, build your profile and explore internship postings.
- Create a LinkedIn profile (or update your profile if you already have one). Include relevant information and skills, connect with people and follow organizations in the field you want to work.

*Do both!*



## SECOND ENGAGE WITH CAREER EXPLORATION

Reflect on a Professional Development activity that you attended earlier in the semester OR plan for how you will engage in the future

*Pick one!*

**TURN IN YOUR REFLECTIONS FOR ACTIVITIES YOU ALREADY ATTENDED BEFORE MARCH 18**

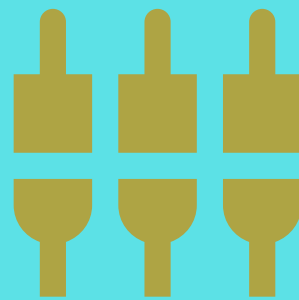
You can still submit the form with the 100 word reflection in Engage based on a professional development activity that you attended earlier in the semester (SWE Career Fair, Lunch with an Engineer, etc.)

**ENGAGE REMOTELY OR RESEARCH YOUR FUTURE CAREER**

Conduct informational interviews via email or phone OR research a company or field that interests you and write your reflection on how you might engage in the future. You can also create an updated resume and upload to the Engage form.

**OR SOMETHING ELSE THAT CAN BE DONE REMOTELY!**

## THIRD GET INVOLVED ON CAMPUS



Reflect on ways that you plugged in on campus before COVID 19 OR research ways you can get involved in the future

*Pick one!*

**TURN IN YOUR REFLECTIONS FOR ACTIVITIES YOU ALREADY ATTENDED BEFORE MARCH 18**

You can still submit the form with the 100 word reflection in Engage based on an activity that you attended earlier in the semester (Club, capstone, research, service, volunteering, etc.)

**RESEARCH WAYS TO GET INVOLVED IN THE FUTURE**

Reflect on your plans to engage in the future - research clubs, organizations or opportunities on campus that you plan to pursue in the future.

**OR SOMETHING ELSE THAT CAN BE DONE REMOTELY!**

**FIND OUT MORE ABOUT CAREER  
EXPLORATION OPPORTUNITIES  
[UP.CAMPUSLABS.COM/ENGAGE](http://UP.CAMPUSLABS.COM/ENGAGE)**

Kate Rohl  
Industry Relations Manager  
rohl@up.edu