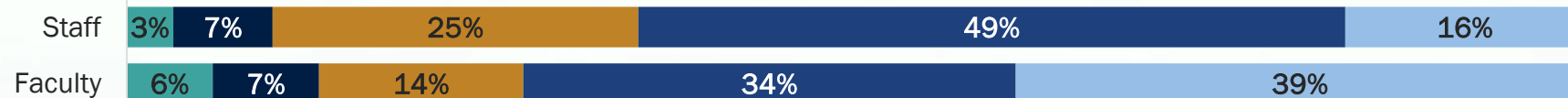


2025 Faculty and Staff Surveys Common Questions

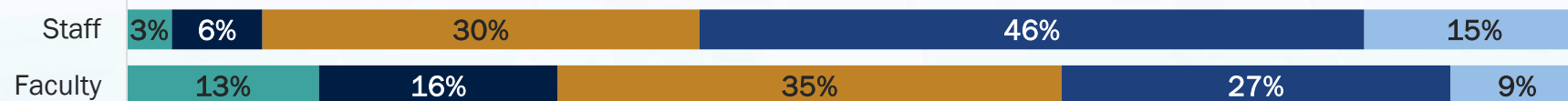
1) Would choose Penn State again



2) There is visible leadership in diversity and inclusion



3) We are making good progress in diversity and inclusion



4) Penn State protects health and safety



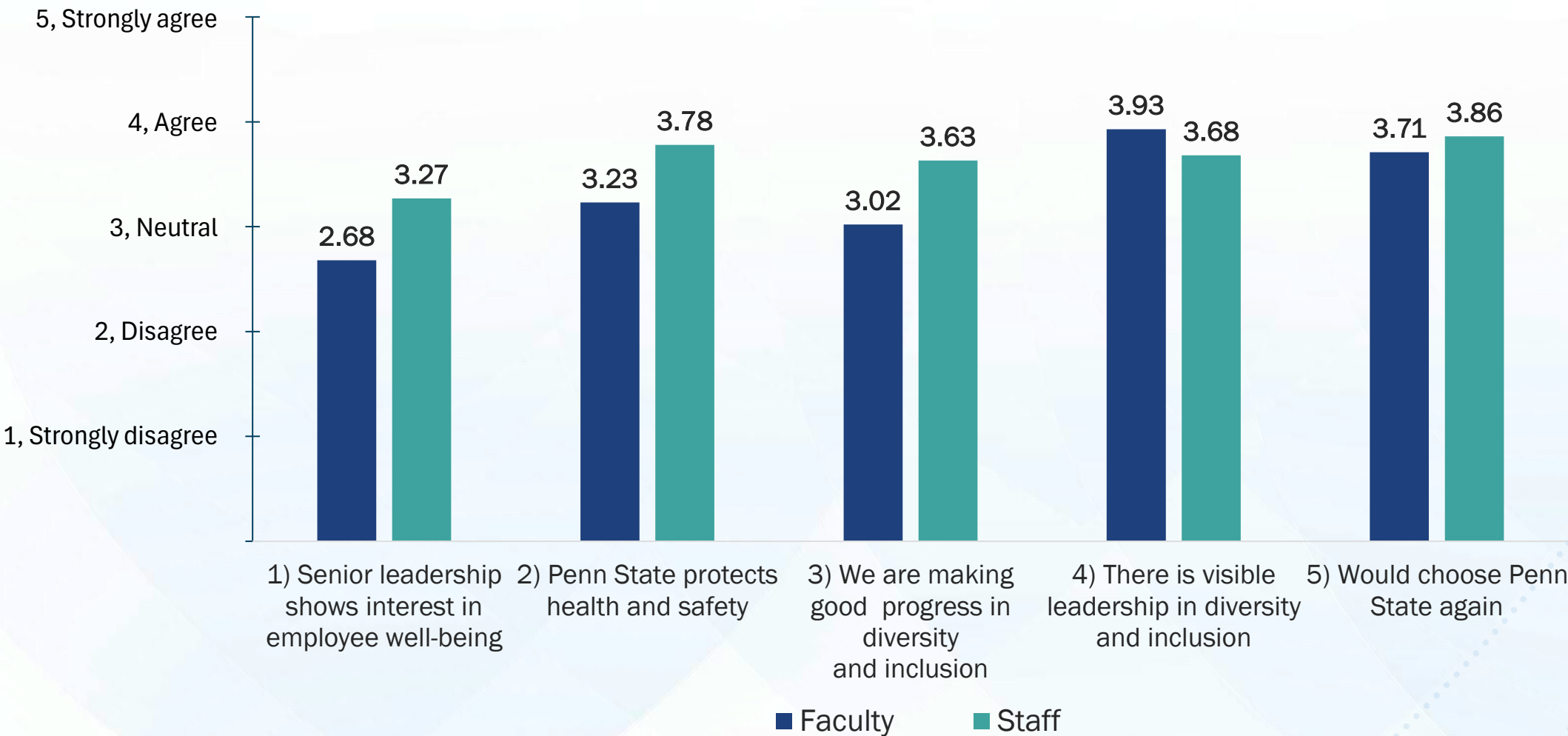
5) Senior leadership shows interest in employee well-being



Strongly disagree Disagree Neutral Agree Strongly agree

Neutral category reflects "neither agree nor disagree" in questions 1 and 2 and "sometimes agree and sometime disagree" in questions 3, 4, and 5.

2025 Faculty and Staff Surveys Common Questions Mean Scores



Neutral category reflects “neither agree nor disagree” in questions 1 and 2 and “sometimes agree and sometime disagree” in questions 3, 4, and 5.